



INTERNATIONAL SOCIETY FOR KEY WOMEN EDUCATORS  
**DELTA KAPPA GAMMA**

**Alpha Iota State President's Newsletter**

International President's Theme 2010 - 2012  
*Embracing Our Vision: Designing Our Future*

[www.dkg.org](http://www.dkg.org)

State Theme 2009-2011

*DKG Service Sharing Sisterhood Scholarship - We Hold the Key*

[www.deltakappagamma.org/MI](http://www.deltakappagamma.org/MI)

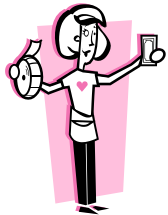


**Alpha Iota State  
 Michigan  
 Volume 2, Issue 4  
 February 2011**

**Members Supporting Members Needs Your Help**

Members Supporting Members is a Michigan project that is building an endowed fund for special speakers stipend at state conventions and conferences. The fund also covers registration costs for three members at state events. We sell lapel pins and raffle tickets to fund this project. They can be purchased at state events or from any member of the executive board.

This year's raffle is for a vacation in Honolulu, Florida, or the Carolina's for a week at accommodations owned by Wyndham Vacation Resorts. You'll receive a brochure when you purchase a raffle ticket that explains all of the details. Only 200 tickets have been printed. You may purchase them from any executive board member at the state convention or you can order your tickets by sending your check made out to *Delta Kappa Gamma Members Supporting Members Raffle*.



**Mail to:**

Kathy Muench  
 11715 Schram Street  
 Grand Blanc, MI 48439

**We Need Your News!**

Articles, announcements, or chapter news for the March President's newsletter should be sent to Jackie Smart at [jackie@mysmartfamily.com](mailto:jackie@mysmartfamily.com) by February 20. The *Wolverine* editor would also like you to share your chapter's activities, news, and happenings with your Michigan sisters. Send news blurbs and photos to [jpechta.dkg.comcast.net](mailto:jpechta.dkg.comcast.net)

**Mission**

*The Delta Kappa Gamma Society International promotes professional and personal growth of women educators and excellence in education.*

**Vision**

*Leading Women Educators  
 Impacting Education Worldwide*



**February 1**

- Chapter Annual Report
- Necrology Report
- Chapter Strategic Plan
- Postmark deadline for Applications for International Scholarships (forms are available at [www.dkg.org](http://www.dkg.org))
- Submission deadline for chapter Newsletter Award

**March 5**

**PAC Meeting**  
 Lansing Lexington  
 10:00 - 3:00  
 \$28.00

**March 15**

Chapter Woman of Distinction Forms due

**April 15 - 17**

**State Convention**  
 Crowne Plaza  
 Detroit - Metro Airport  
 8000 Merriman Road  
 Romulus, Michigan 48174

**June 11**

**PAC Changeover**  
 Lansing Lexington  
 10:00 - 3:00  
 \$28.00

## State Visitations



If your chapter would like a visit from our State President or any state officer or chairman, please complete an official state visit request form (found on the state web site or in your president packet at Fall Conference) and mail it to me.

Fran Saenz  
State Visitations Chairman

## Chapter Woman of Distinction & State Woman of Distinction

Chapter Presidents and Personal Growth chairs, please begin the process in your chapter for selecting your Chapter Woman of Distinction. Send your choice to me by March 15, 2011.

To find forms for both the Chapter Woman and the State Woman of Distinction, go to the Alpha Iota State website at [www.deltakappagamma.org/MI](http://www.deltakappagamma.org/MI) click on "Forms."

Dorothy E. Sample, PhD  
Personal Growth and Service Chair

## Funding Our Purposes



State Convention is just around the corner, so it's time for chapters to think about what kind of donation or theme basket they would like to bring for the Funding Our Purposes Auction. This is a great way for chapters to show creativity

while giving the Alpha Iota members a chance to SHOP!

Proceeds from the auction go to three funds:

- Scholarships
- World Fellowships
- Members Supporting Members

Your contribution to the auction also helps your chapter meet # 8 of the criteria for the Award of the Rose.

Judi Fisher  
Funding Our Purposes Chairman

## Alpha Iota State Convention April 15 - 17, 2011

Now is the Time!

Now is the time to plan to join your DKG sisters at the state conference in Romulus.

Now is the time to invite first timers to the conference.

Now is the time to read the Winter Wolverine and think about breakout sessions and CEUs.

Now is the time to raise your consciousness about airplanes, space travel, and our landing pad, the Crowne Plaza - Detroit Metro Airport.

Now is the time to decide which of your prettiest outfits you will wear to the banquet.

It is a celebration of chapter presidents and a time to honor award recipients.

Yes, now is the time!

Olive Horning  
State First Vice President

## Looking for NE Regional Conference Choir Members!



July 20 – 24, 2011 in Hershey, PA  
Contact Shirley Newhart, Music Director  
[snewhart@comcast.net](mailto:snewhart@comcast.net)  
717-566-3988

Please include the following:  
Name, voice part (S1, S2, A1, A2), home & email address and phone number.

*Soap and education are not as sudden as a massacre, but they are more deadly in the long run. Training is everything. The peach was once a bitter almond; cauliflower is nothing but cabbage with a college education.*

Mark Twain



## Membership Tidbits

Presidents, don't forget to email or send via U.S. mail photos and news items regarding chapter members. We would like to display information regarding new initiates and any honors or awards granted to your chapter or its members at spring convention. Send to Claire Rettenmund, Membership/Expansion Co-Chair at [cerbirder@yahoo.com](mailto:cerbirder@yahoo.com)

The best way to keep members involved is make each person feel welcome and needed. As difficult as it may be, delegate! Have as many people as possible be responsible for specific aspects of a meeting. Go beyond the standard offices and ask for help for even small jobs. And don't forget your shut-ins and reserve members. They can help from home on many projects. Many hands not only make for light work but happy members.

Claire Rettenmund,  
Membership/Expansion Co-Chairman

## Personal Growth/Sharing Activity

Have total members in attendance count off so that each group will have four women in it. Before you send them to groups, give a sheet with the following:

### List

1. Two people who have made you feel appreciated and enhanced.
2. A person who has taught you something very worthwhile.
3. Two friends who have helped you through difficult times.
4. A teacher who made a significant, positive difference in your life.
5. One-three people with whom you enjoy spending time.

Share some of your answers with your group. As you share, explain how the individual was a positive influence in your life. What makes that person special?

Dorothy E. Sample, PhD  
Personal Growth and Services Chair

## Strengthening Chapters

Dr. Jensi Souders *taken from DKG NEWS, JAN/FEB 2011*

As we strive to strengthen chapters by retaining members and encouraging strong chapter leadership, stagnating or struggling chapters are often characterized by the following "symptoms"

- ◆ Chapter members like things the way they've "always been" and are reluctant to make change;
- ◆ Chapter leadership is faltering, as few are willing to accept leadership responsibilities;
- ◆ No new members have been initiated in one or more years;
- ◆ New members drop out within three years;
- ◆ A majority of the chapter is retired and members say they don't know where to find new members;
- ◆ Chapter members have not attended a Society event outside the chapter in two or more years;
- ◆ Members don't keep up with Society news by reading their state organization/international newsletters or the *Bulletin* and/or don't use the available Society Web sites to seek information;
- ◆ Chapter members don't ask for help, being unwilling to admit or don't recognize that there is anything amiss.

We've always said that a member doesn't really understand the Society until she "goes beyond the chapter." Learning and getting excited about the full scope of the organization, with its many benefits of membership, is realized through networking with other members, fully participating in chapter activities, experiencing the organization beyond the chapter level so as to take advantage of benefits of membership, and being excited enough about our Society to want to become a leader and or mentor within the organization. Does your chapter have one or more of the above "symptoms"? If so, don't let those symptoms continue!

- ◆ Contact your area/district director or state president and ask for help in turning your chapter into a vibrant, successful one that educators will be eager to join.
- ◆ Contact surrounding chapters to get successful ideas that your chapter can use.
- ◆ Check out the international Web site for program/project and membership ideas.

All chapters go through a natural cycle of "up" and "down" swings. If your chapter is in a "downswing," do something before it becomes a disaster. If you don't step out beyond your chapter, you'll never know what wonderful things your chapter could be doing for your members, your community, and our world.

## Get Smart

State President - Jackie Smart



January is traditionally the time for resolutions. This year make your resolution meaningful and achievable. Resolve for 2011 to become more involved in DKG at all three levels: chapter, state, and International. We all know that DKG is an International Society and at convention you learn more about the structure of the organization. In Dr. Souders message on page 3, she stated the importance of experiencing the organization beyond the chapter level. When you attend a state convention, you see the Society from a different point of view. Convention gives us the opportunity "to unite women educators in a world of genuine fellowship" and to enhance our involvement in an organization we are proud to be in. I sincerely believe that attending a state convention is worth the expense of travel, meals, and lodging. So pencil April 15 - 17 on your calendar and I'll see you at the Crowne Plaza Metro Airport in Romulus, Michigan.

Besides Executive Board and the General Membership session, there are many wonderful workshops to attend. Olive Horning and the Program of Work Committee want to make your trip to the state convention worth your time and money, as well. You will have the opportunity to attend sessions that will be of interest to a variety of members, communicate Society information, help members earn SB-CEU credit, fulfill professional development hours, and inspire personal growth. I have always gleaned ideas for chapter programs and service projects, not to mention the many new friends I have made. I love going to convention!

During the convention in Romulus, you will have the opportunity to meet the International guest, Dr. Jensi Souders, 2010-2012 International President. Dr. Souders is an engaging speaker and will bring us up-to-date as to what is happening at the International level. On Sunday morning, we will honor our departed sisters during the Celebration of Life ceremony. Chapters will receive recognition for their achievements at the Awards Brunch.

After last year's success in Traverse City, we will combine the Executive Board meeting and the General Membership session on Friday evening. The meeting will begin at 8:00 p.m. We have made arrangements for a buffet dinner opportunity on Friday for your convenience. Please communicate this with your members.

## REMINDERS

- Minutes and Budget are in the mailing for you to review for the April Executive Board.
- After the combined Executive Board and General Membership meeting on Friday, chapter presidents will have the procession practice. Please send the name of the chapter president (or her representative in the procession) to J-Jay Pechta. Information regarding the procession will be in the Winter *Wolverine*.
- Coordinating Councils will meet after the procession practice on Friday Night.
- Chapter Presidents should send their Chapter President Annual Report via post or email to me by February 1. Interactive forms are on the state website. Remember to save the document after you complete it and attach it in an email to me at:

**jackie@mysmartfamily.com**

Jackie Smart  
20158 Southampton Drive  
Livonia, MI 48152

- Updated Chapter Strategic Plans should be sent to me by February 1. This meets #11 on the Award of the Rose application.
- Chapter Necrology Report is also due February 1. Please complete this form even if there has not been a death in your chapter. Send this report via email or post to Lynne Elsesser at:

Lynne Elsesser  
20440 Lexington Blvd.  
Northville, MI 48167 or  
**elsessl2@wowway.com**

\*note these are lowercase "L's" not number ones

*Jackie*

*I'm extraordinarily patient, provided I get my own way in the end.*

*Margaret Thatcher*

*If an opportunity scares you, that's God's way of saying you should jump at it.*

*Anna Quindlen*